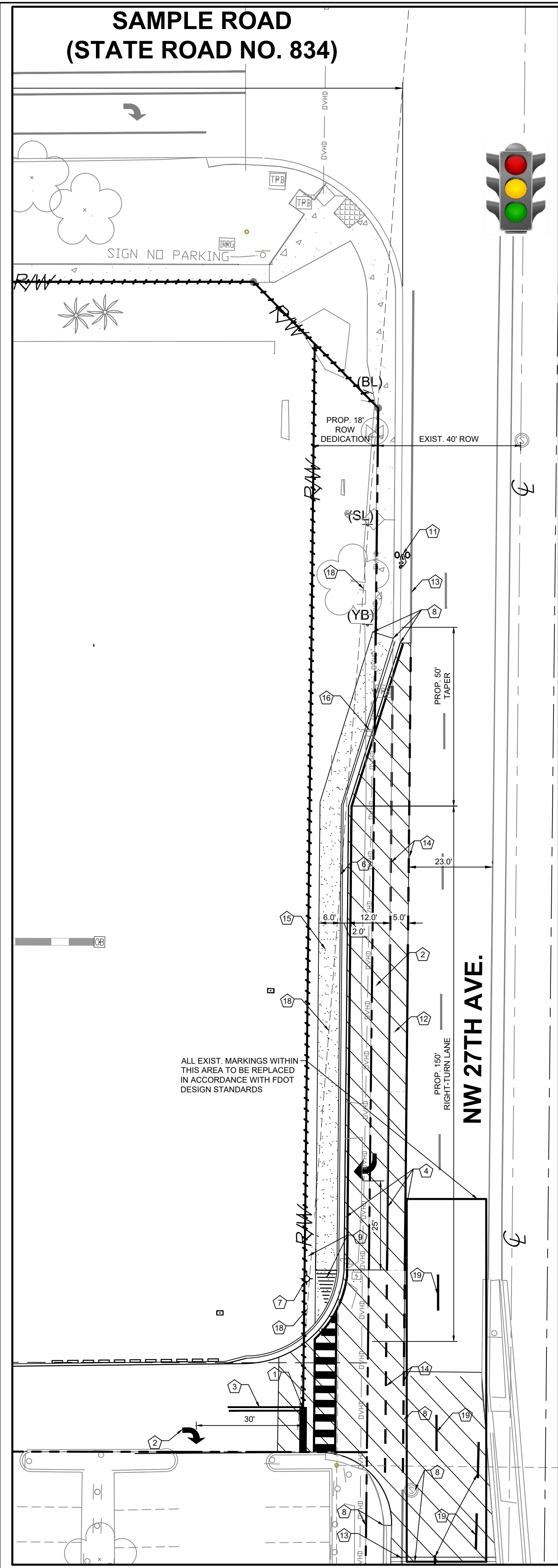
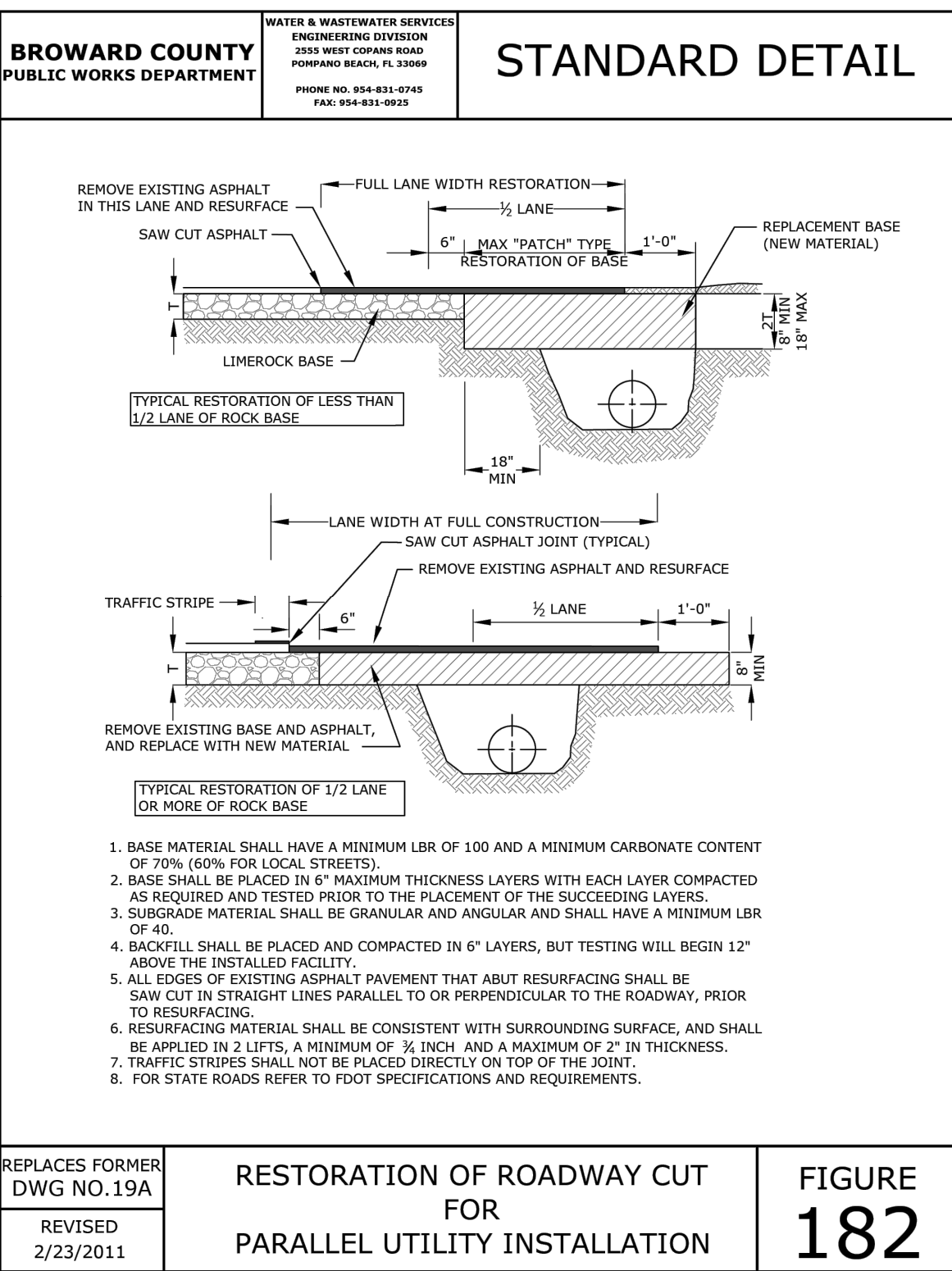
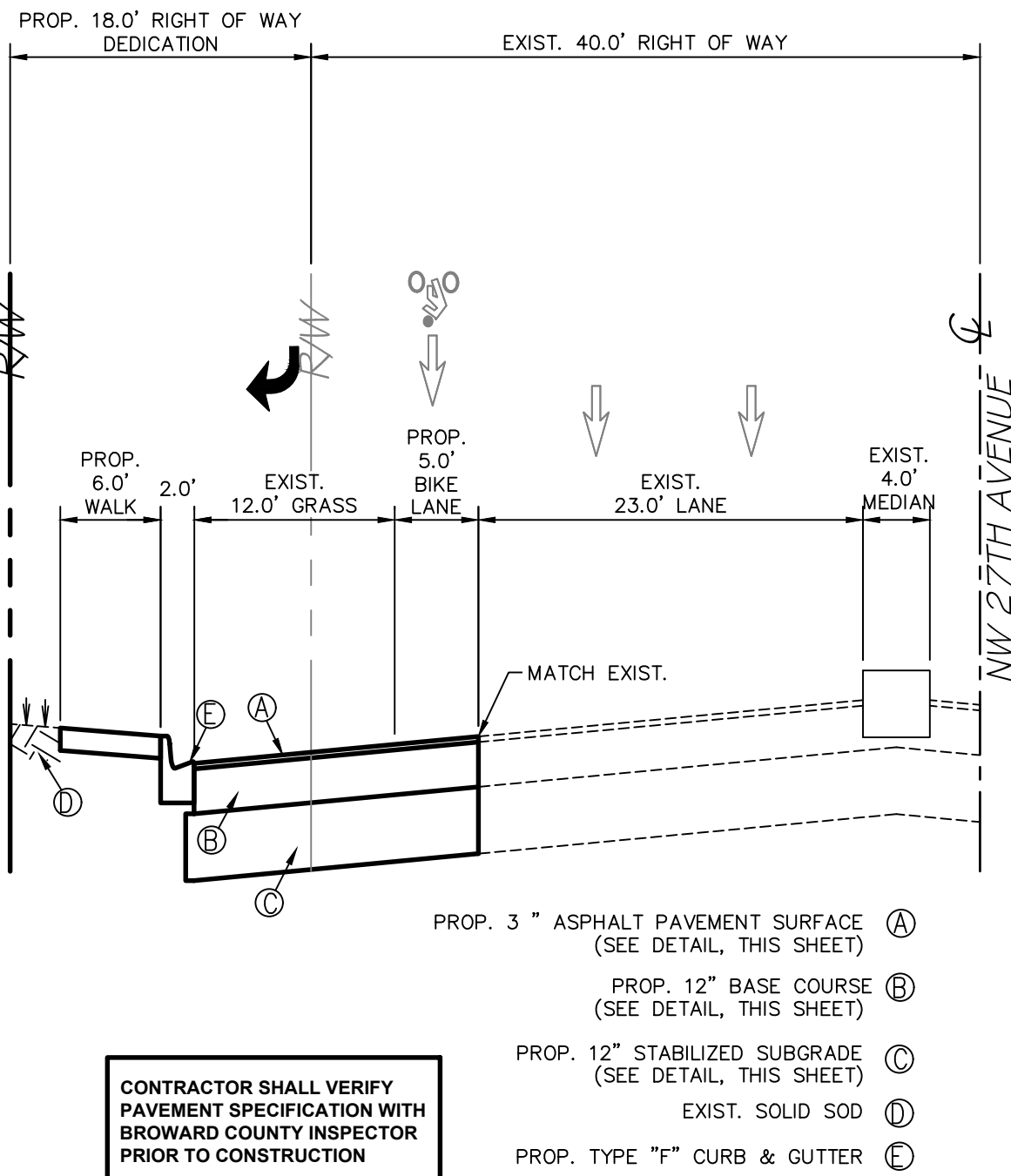


C:\Users\angom\My Shared Documents\DWG\674 NW 27TH AVENUE TURNLANE BLOW UP PLAN.dwg 10/15/2025 11:44pm



KEYNOTE LEGEND

- 1 PROP. STOP-BAR PER FDOT INDEX 711-001
- 2 PROP. WHITE DIRECTIONAL ARROWS PER FDOT INDEX 711-002
- 3 PROP. 25'-6" DOUBLE YELLOWS PER FDOT INDEX 711-001
- 4 PROP. 6" WHITE STRIPING PER FDOT INDEX 711-001
- 5 CROSSWALK STRIPING PER FDOT INDEX 711-001, 10 of 14
- 6 PROP. TYPE "F" CURB AND GUTTER IN ACCORDANCE WITH FDOT DESIGN STANDARDS 2020, AND FDOT INDEX 520-001
- 7 PROP. RELOCATED LIGHT POLE
- 8 MATCH EXISTING LINE AND GRADE
- 9 PROP. HANDICAP RAMP TYPE CR-G PER FDOT 2020 INDEX 522-002, 4 OF 8
- 10 PROP. DETECTABLE WARNING PER FDOT INDEX 522-002, 6 OF 8, B
- 11 PROP. BICYCLE MARKING PER FDOT INDEX 711-002
- 12 PROP. 5' WIDE BICYCLE LANE
- 13 EXIST. 6" WHITE STRIPING
- 14 PROP. 6" THICK CONCRETE SIDEWALK
- 15 EXIST. 40 MPH SPEED LIMIT SIGN (TO BE RELOCATED)
- 16 EXIST. STOP SIGN (TO BE RELOCATED)
- 17 SAFE SIGHT TRIANGLE PER FDOT DESIGN MANUAL 2020 CHAPTER 212.11, EXHIBIT 212.6
- 18 EXIST. MARKINGS TO BE REPLACED IN ACCORDANCE WITH FDOT DESIGN STANDARDS



STRUCTURE TABLE			
STRUCTURE NUMBER	STRUCTURE TYPE	RIM ELEVATION	INVERT ELEVATION
EX-1	EXISTING CATCH BASIN	12.00	(15') 3.59 (W)
S-21	PROP. 48" DRAINAGE MANHOLE PER FDOT STND PLANS, CONTRACTOR TO CORE DRILL AND CONNECT PROP. 18" HDPE STORM PIPE	11.00 M.E.	(15') 3.59 (E) (18') 3.59 (NW)
S-22	PROP. 48" CATCH BASIN AND TYPE "C" FRAME, AND GRATE PER FDOT STND PLANS 425-052 WITH TYPE II SKIMMER PER FDOT STND PLAN INDEXES 232 & 241	11.30	(18') 3.59 (SE) (18') 3.59 (N)
S-23	PROP. 48" CATCH BASIN AND TYPE "C" FRAME, AND GRATE PER FDOT STND PLANS 425-052 WITH TYPE II SKIMMER PER FDOT STND PLAN INDEXES 232 & 241	12.30	(18') 3.59 (S)

SITE SYMBOLS /LEGEND

- (S) STOP SIGN, R1-1, 36"X36"
- (RO) RIGHT TURN ONLY, R3-SR, 30" X 36"
- (YB) YIELD TO BIKES, R4-4, 36" X 30"
- (SL) SPEED LIMIT 40 R2-4, 18" X 24"
- (BL) BIKE LANE R3-17
- PROPOSED SOLID DIRECTIONAL ARROW
- (E.P.) EDGE OF P.V.M.T. ELEV. OR GROUND ELEV.
- PROP. FLOW DIRECTION
- EXIST. GRADE ELEVATION

HATCH LEGEND

- PROPOSED CONCRETE SIDEWALK
- PROPOSED NEW PAVEMENT, CONTRACTOR SHALL MATCH EXISTING PAVEMENT PER FDOT STANDARDS SPECIFICATIONS

- 3" OPTIONAL BASE GROUP 9 (OBG9), ASPHALT SHALL BE PLACED IN TWO (2) LIFTS: 2" OF SP-12.5 AND 1" OF SP-9.5
- 12" CRUSHED LIMESTONE BASE COURSE HAVING A MINIMUM LBR OF 100 AND MINIMUM CARBON CALCIUM CONTENT 70% COMPACTED TO AT LEAST 98% OF THE MODIFIED PROCTOR, MAXIMUM DRY DENSITY PER ASTM D-1557, PLACED IN (2) LIFTS, PER MG, PW.
- TYPE B OR C, 12" STABILIZED SUB-BASE FILLED WITH MINIMUM LBR OF 40 COMPACTED TO AT LEAST 98% OF THE MODIFIED PROCTOR MAXIMUM DRY DENSITY PER ASTM D-1557.

FDOT PAVEMENT DETAIL

SCALE: N.T.S.

PAVEMENT NOTE:

ANY PAVEMENT MARKINGS DAMAGED DUE TO CONSTRUCTION WILL BE REPLACED AT CONTRACTOR'S EXPENSE.

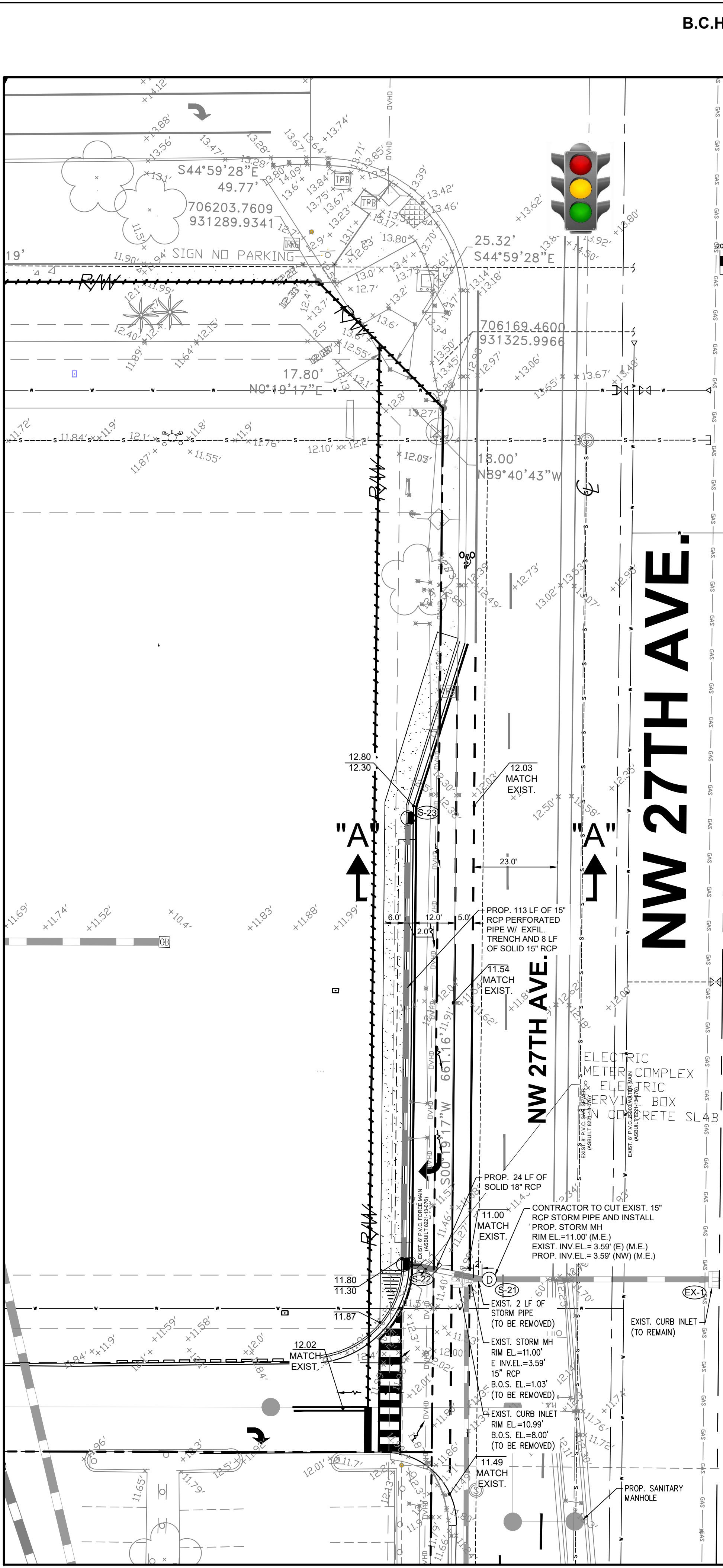
ELEVATIONS NOTE:

ELEVATIONS ARE RELATIVE TO THE NORTH AMERICAN VERTICAL DATUM OF 1988 (NAVD88) AND ARE BASED ON THE BROWARD COUNTY BENCHMARK #260/2752C.

REFER TO BOUNDARY AND TOPOGRAPHIC SURVEY CONDUCTED BY MILLER LEGG.

ADA NOTE:

CONSULTANT HAS IDENTIFIED AND USED THE CURRENT VERSION OF ALL LOCAL, STATE, AND FEDERAL ACCESSIBILITY GUIDELINES FOR SITE ACCESSIBILITY. THE SITE HAS BEEN DESIGNED IN ACCORDANCE WITH, BUT NOT LIMITED TO, CITY, COUNTY, AND STATE ACCESSIBILITY CODES, AND THE 2010 AMERICANS WITH DISABILITIES ACT STANDARDS FOR ACCESSIBLE DESIGN (2010 ADA STANDARDS), AS AMENDED.



B.C.H.C.E.D. REF. NO. 200617002

PZ22- 12000027
12/03/2025

GRAPHIC SCALE

(IN FEET)

BROWARD COUNTY NOTES:

THE FOLLOWING ITEMS ARE NOT REVIEWED OR ACCEPTED BY BROWARD COUNTY:

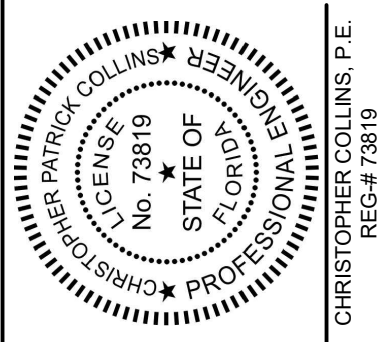
1. BROWARD COUNTY TRAFFIC ENGINEERING DIVISION'S REVIEW DOES NOT INCLUDE A REVIEW AND ACCEPTANCE OF THE PROJECT'S DESIGN OR OPERATION. THESE ITEMS ARE TO BE REVIEWED AND APPROVED BY THE CITY ENGINEER.

2. BROWARD COUNTY TRAFFIC ENGINEERING DIVISION DOES NOT REVIEW AND APPROVE, OR INSPECT AND ACCEPT THE FOLLOWING ITEMS FOR MAINTENANCE: PAVEMENT MARKINGS ON OR ADJACENT TO PAVEMENT MARKINGS, PAINTED ASPHALT, STAMPED ASPHALT OR PAVEMENT MARKINGS MADE OF PAVEMENT MARKINGS, UN-WARRANTED MID-BLOCK CROSSWALKS AND RELATED MARKINGS AND SIGNING, UN-WARRANTED CROSSWALKS AND RELATED MARKINGS AND SIGNING, PAINTED/DECORATIVE CROSSWALKS, RAISED CROSSWALKS AND RELATED MARKINGS AND SIGNING, ADVANCED WARNING PAVEMENT MARKINGS FOR SPEED TABLES, BLINKER SIGNS, RECTANGULAR RAPID FLASHER BEACONS AND RELATED MARKINGS AND SIGNING, ON-STREET PARKING AND RELATED MARKINGS AND SIGNING, IN-ROAD LIGHTING AND RELATED MARKINGS AND SIGNING, GREEN BIKE LANES, FLEXIBLE DELINEATORS, DECORATIVE SIGNS AND DECORATIVE SIGN POSTS, PLANTERS, ON-SITE PAVEMENT MARKINGS AND SIGNING, OFF-SITE PAVEMENT MARKINGS AND SIGNING IN RIGHT-OF-WAY THAT IS NOT DEDICATED FOR PUBLIC USE, SIDEWALK WORK OR ASPHALT WORK.

3. THE CITY ENGINEER IS RESPONSIBLE FOR THE REVIEW AND APPROVAL OF THE DESIGN AND OPERATION OF THE PROJECT, AND FOR THE INSPECTION AND ACCEPTANCE OF THE FOLLOWING ITEMS THAT WILL BE MAINTAINED BY THE CITY: PAVEMENT MARKINGS ON OR ADJACENT TO PAVEMENT MARKINGS, PAINTED ASPHALT, STAMPED ASPHALT OR PAVEMENT MARKINGS MADE OF PAVEMENT MARKINGS, UN-WARRANTED MID-BLOCK CROSSWALKS AND RELATED MARKINGS AND SIGNING, UN-WARRANTED CROSSWALKS AND RELATED MARKINGS AND SIGNING, PAINTED/DECORATIVE CROSSWALKS, RAISED CROSSWALKS AND RELATED MARKINGS AND SIGNING, ADVANCED WARNING PAVEMENT MARKINGS FOR SPEED TABLES, BLINKER SIGNS, RECTANGULAR RAPID FLASHER BEACONS AND RELATED MARKINGS AND SIGNING, ON-STREET PARKING AND RELATED MARKINGS AND SIGNING, IN-ROAD LIGHTING AND RELATED MARKINGS AND SIGNING, GREEN BIKE LANES, FLEXIBLE DELINEATORS, DECORATIVE SIGNS AND DECORATIVE SIGN POSTS, PLANTERS, ON-SITE PAVEMENT MARKINGS AND SIGNING, OFF-SITE PAVEMENT MARKINGS AND SIGNING IN RIGHT-OF-WAY THAT IS NOT DEDICATED FOR PUBLIC USE, SIDEWALK WORK AND ASPHALT WORK.

4. ALL TRAFFIC CONTROL DEVICES MAINTAINED BY BROWARD COUNTY, THAT ARE REMOVED OR DAMAGED BY CONSTRUCTION, SHALL BE REPLACED BY CONTRACTOR USING CURRENT BROWARD COUNTY TRAFFIC ENGINEERING DIVISION STANDARDS.

**10800 BISCAYNE BLVD.
SUITE 935
MIAMI, FL 33161
Phone: 305.720.2079
C.O.A. 33221**



This Item has been digitally signed and sealed by Christopher P. Collins, P.E. on the date adjacent to the seal.

Printed copies of this document are not considered signed and sealed and the signature must be verified on any electronics copies.

Revision	Date	Comment
Revision	Date	Comment
Revision	Date	Comment
Revision	Date	Comment
Revision	Date	Comment
Revision	Date	Comment
Revision	Date	Comment
Revision	Date	Comment

Designed by: C.P.C.
Drawn by: A.T.S.
Checked by: C.P.C.
Approved by: C.P.C.
Scale: 1" = 20'
Date: 05/25/2022
Job No.: I002
Plans for

**FESTIVAL
MARKETPLACE**
2900 W SAMPLE ROAD
POMPANO BEACH,
FLORIDA

**NW 27TH AVENUE
TURNLANE
BLOW UP
PLAN**

Sheet No.
C-7.4



Call 811 or visit sunshine811.com two full business days before digging to have buried facilities located and marked.
Check positive response codes before you dig!